

# Product Information Sheet

COMMISSION DELEGATED REGULATION (EU) 2019/2015 with regard to energy labelling of light sources

**Supplier's name or trade mark:** VIVALUX

**Supplier's address:** Office, Bansko shose 27A, 8800 Sliven, BG

**Model identifier:** NERO LED JDR 7W GU10 W

## Type of light source:

Lighting technology used:	LED	Non-directional or directional:	DLS
Light source cap-type (or other electric interface)	GU10		
Mains or non-mains:	MLS	Connected light source (CLS):	No
Colour-tuneable light source:	No	Envelope:	-
High luminance light source:	No		
Anti-glare shield:	No	Dimmable:	No

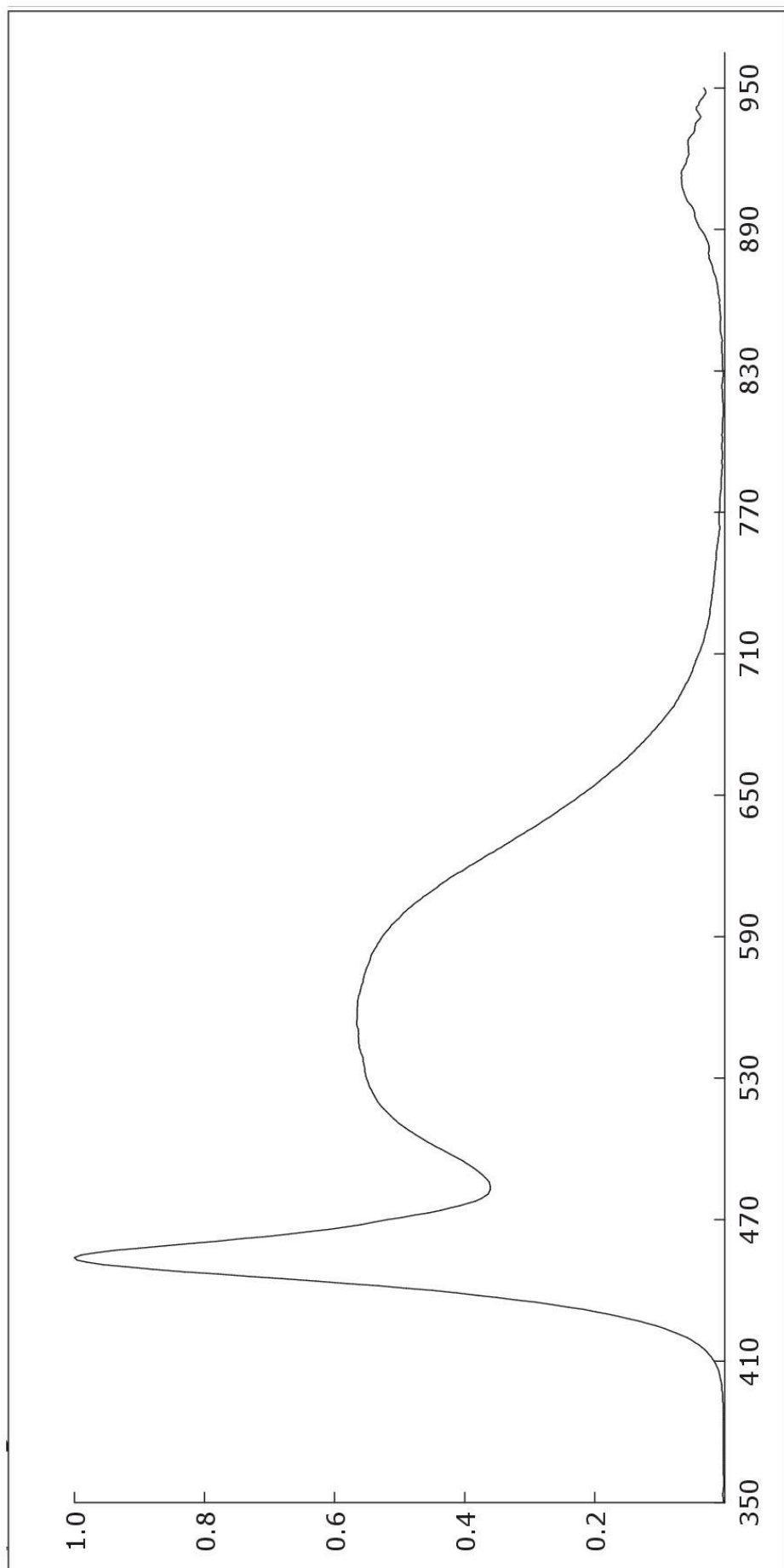
## Product parameters

Parameter	Value	Parameter	Value
<b>General product parameters:</b>			
Energy consumption in on-mode (kWh/1000 h), rounded up to the nearest integer	7	Energy efficiency class	F
Useful luminous flux ( $\phi_{use}$ ), indicating if it refers to the flux in a sphere (360°), in a wide cone (120°) or in a narrow cone (90°)	560 in Nar-row cone (90°)	Correlated colour temperature, rounded to the nearest 100 K, or the range of correlated colour temperatures, rounded to the nearest 100 K, that can be set	6 400
On-mode power ( $P_{on}$ ), expressed in W	7,0	Standby power ( $P_{sb}$ ), expressed in W and rounded to the second decimal	0,00
Networked standby power ( $P_{net}$ ) for CLS, expressed in W and rounded to the second decimal	-	Colour rendering index, rounded to the nearest integer, or the range of CRI-values that can be set	80
Outer dimensions without separate control gear, lighting control	Height	Spectral power distribution in the range 250 nm to 800 nm, at full-load	See image in last page
	Width		
	Depth		

parts and non-lighting control parts, if any (millimetre)				
Claim of equivalent power <sup>(a)</sup>	-	If yes, equivalent power (W)	-	
		Chromaticity coordinates (x and y)	0,314 0,341	
<b>Parameters for directional light sources:</b>				
Peak luminous intensity (cd)	597	Beam angle in degrees, or the range of beam angles that can be set	38	
<b>Parameters for LED and OLED light sources:</b>				
R9 colour rendering index value	3	Survival factor	0,90	
the lumen maintenance factor	0,94			
<b>Parameters for LED and OLED mains light sources:</b>				
displacement factor (cos $\phi_1$ )	0,70	Colour consistency in McAdam ellipses	6	
Claims that an LED light source replaces a fluorescent light source without integrated ballast of a particular wattage.	-(b)	If yes then replacement claim (W)	-	
Flicker metric (Pst LM)	0,0	Stroboscopic effect metric (SVM)	-	

(a) '-': not applicable;

(b) '-': not applicable;



Model placed on the Union market from 19/12/2024.



**EPREL registration number:** 2075850

<https://eprel.ec.europa.eu/qr/2075850>

**Supplier:** VIVA EOOD (Manufacturer)

**Website:** [www.vivalux.bg](http://www.vivalux.bg)

**Customer care service:**

**Name:** Office

**Website:** [www.vivalux.bg](http://www.vivalux.bg)

**Email:** [office@viva.bg](mailto:office@viva.bg)

**Phone:** +35944666080

**Address:**

Bansko shose 27A  
8800 Sliven  
Bulgaria